

Svärmors sjal (Shawl for Mother in Law)

I made this shawl for my mother in law's 60th birthday. It is based on a lace pattern from the Estonian lace pattern book Pitsilised koekirjad by Leili Reimann. I adapted the pattern to make a triangular shawl knitted from the bottom tip and upwards. Mother in law was very happy but claims she's afraid to wear it. I keep telling her I'll make her another one should the first be worn out. But you know – it's difficult to please mothers in law...

Yarn: 100g Östergötlands ullspinneri pälsull 600 m/ 100 g

More info about the yarn: www.ullspinneriet.com

The yarn can be bought at for instance www.yllotyll.com

Needles: 3.5 mm circular needle (80 cm)

Difficulty level: medium

Finished size (washed and blocked): 80 cm from top to bottom, 170 cm wide

Gauge: to please your eyes (i.e. not crucial)

How to

Cast on 5 stitches and knit rows 1-16 according to chart 1.

Continue with chart 2 repeating rows 17-32 and repeating the pattern repeat as the shawl grows.

When you are satisfied with the size of the shawl or you run out of yarn: knit rows 31 and 32 (or rows 23 and 24) without casting on the 3 stitches at each end. My shawl was 26 repeats ("leaves") wide.

Bind off loosely. Fasten ends, wash gently and block to desired size.

Abbreviations

RS: right side

WS: wrong side

pssso: pass slipped stitch over

st: stitch

k: knit

Rights and permission

This pattern is for personal use only.

Pattern and copyright Liisa Byberg.

This pattern is published by Sticka! More information at www.sticka.org.

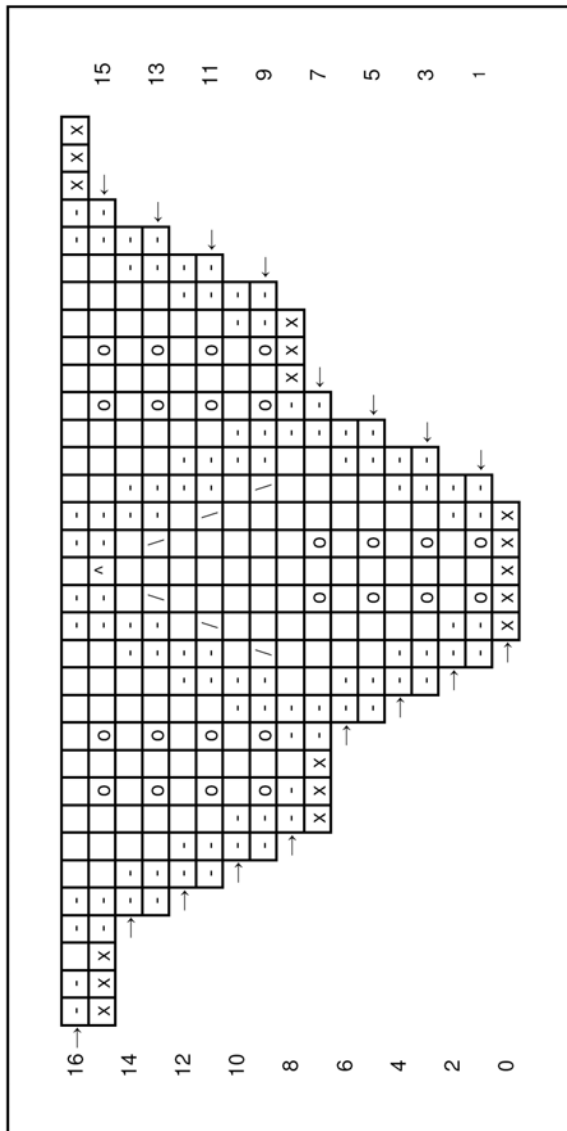
Update 25 November 2015

Dear knitter,
I made the charts for this pattern in 2006
and cannot find the files in my computer to
produce a corrected pattern. At this moment
I can't find the time to make a new version
of the charts but have indicated where I had
made a mistake in the chart.

Happy knitting!
/Liisa

Svärmors sjal (Shawl for Mother in Law)

Chart 1



<input type="checkbox"/>	knit on RS, purl on WS	<input type="checkbox"/>	slip 1, k2 together, pss0
<input type="checkbox"/>	purl on RS, knit on WS	<input type="checkbox"/>	knit 2 together
<input type="checkbox"/>	yarn over	<input type="checkbox"/>	slip slip knit
<input type="checkbox"/>	cast on one st	<input type="checkbox"/>	pattern repeat
<input type="checkbox"/>	start here WS	<input type="checkbox"/>	start here RS

A knit stitch on RS (purl on WS) should be inserted here on rows 25-32.

Chart 2

